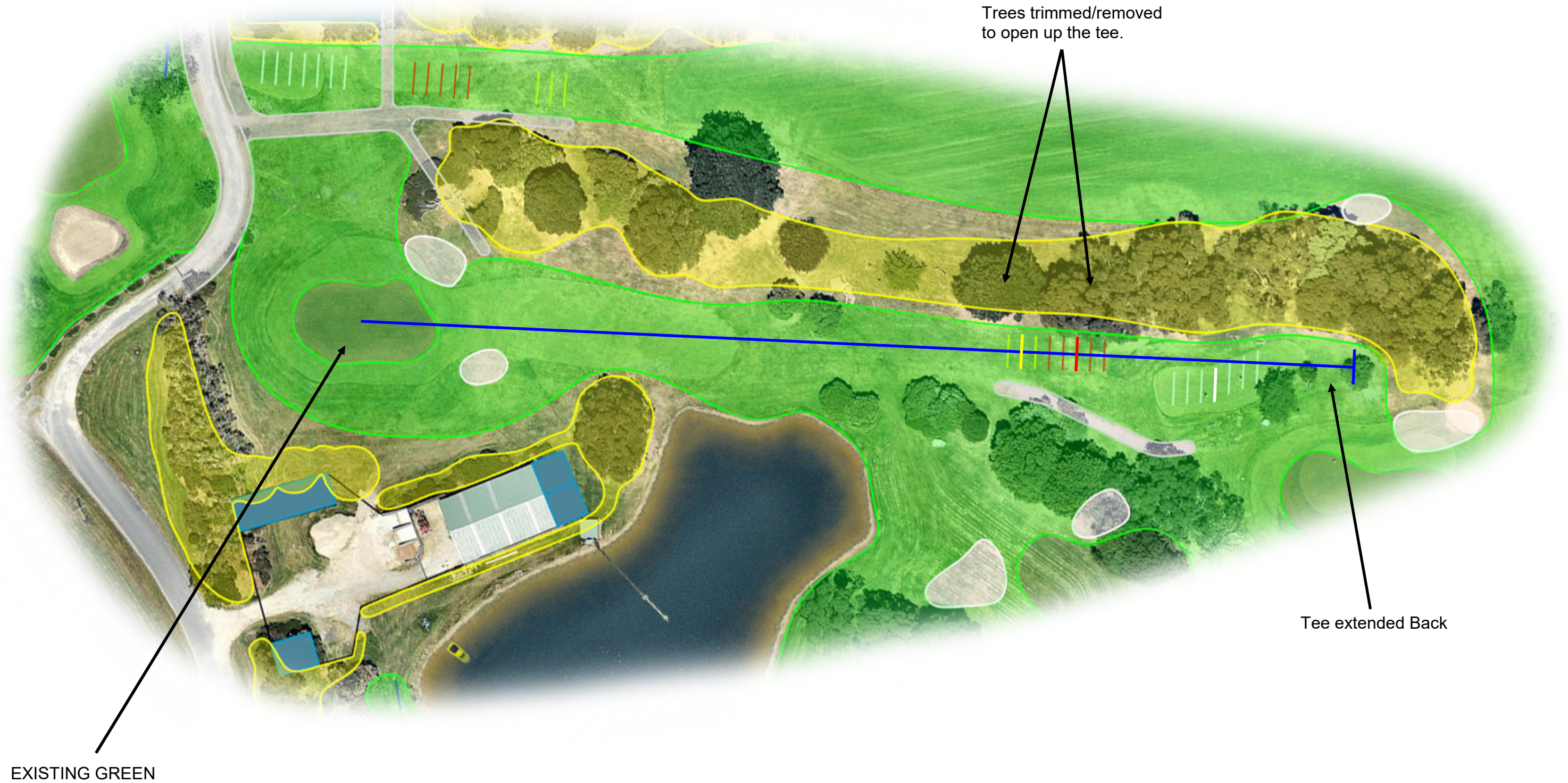


FROM CURRENT PERMANENT MARKERS	<b>HOLE 16</b>		<b>PAR 3</b>	
	<b>165m</b>		<b>155m</b>	



FROM REDEVELOPED TEES WITH CYCLIC TEE POSITIONING	<b>HOLE 16</b>		<b>PAR 3</b>	
	<b>180m</b>	155m	<b>130m</b>	<b>120m</b>