

CLUBHOUSE ZONE

CONSIDERATIONS

1. Increased and organised parking spaces. Sealed and kerbed carpark and driveway
2. Clubhouse extensions.
3. Increased golf cart storages for both club owned & member owned carts.
4. Cart paths.
5. Upgraded sewage management.
6. Clubhouse zone storm water and nearby drainage water harvesting.
7. Clubhouse zone landscaping and beautification.
8. Machinery shed enclosure shed space, security and camouflage.



Clubhouse extended to include:

- Increased floor space on the west side for a spike bar. Increased floor space on the south end for kitchen and ladies room.
- Increased floor space on the north end for the bar and mens room..
- Increased floor space on the east side for additional function room capacity.
- Extensions to the north east including pro shop, administration offices and stor-

Existing cart shed removed/relocated and slab used for assembly of club owned carts ready for hire.



Carpark extended 9m towards the 8th green, sealed, kerbed and line marked to hold 120 cars.

Member cart shed between the 10th and 17th tees and extended to house 30 carts.

Golf cart trailer parking on gravel.

Area fenced and developed as habitat for the Southern Brown Bandicoot

Sewage treatment facility and adjacent well for recycled water, storm water and drainage water collection and harvesting.

Water is pumped in a new dedicated pipe to the dam in the 16th.

The pump from the drain can be connected to this dedicated pipe to avoid using the irrigation main.

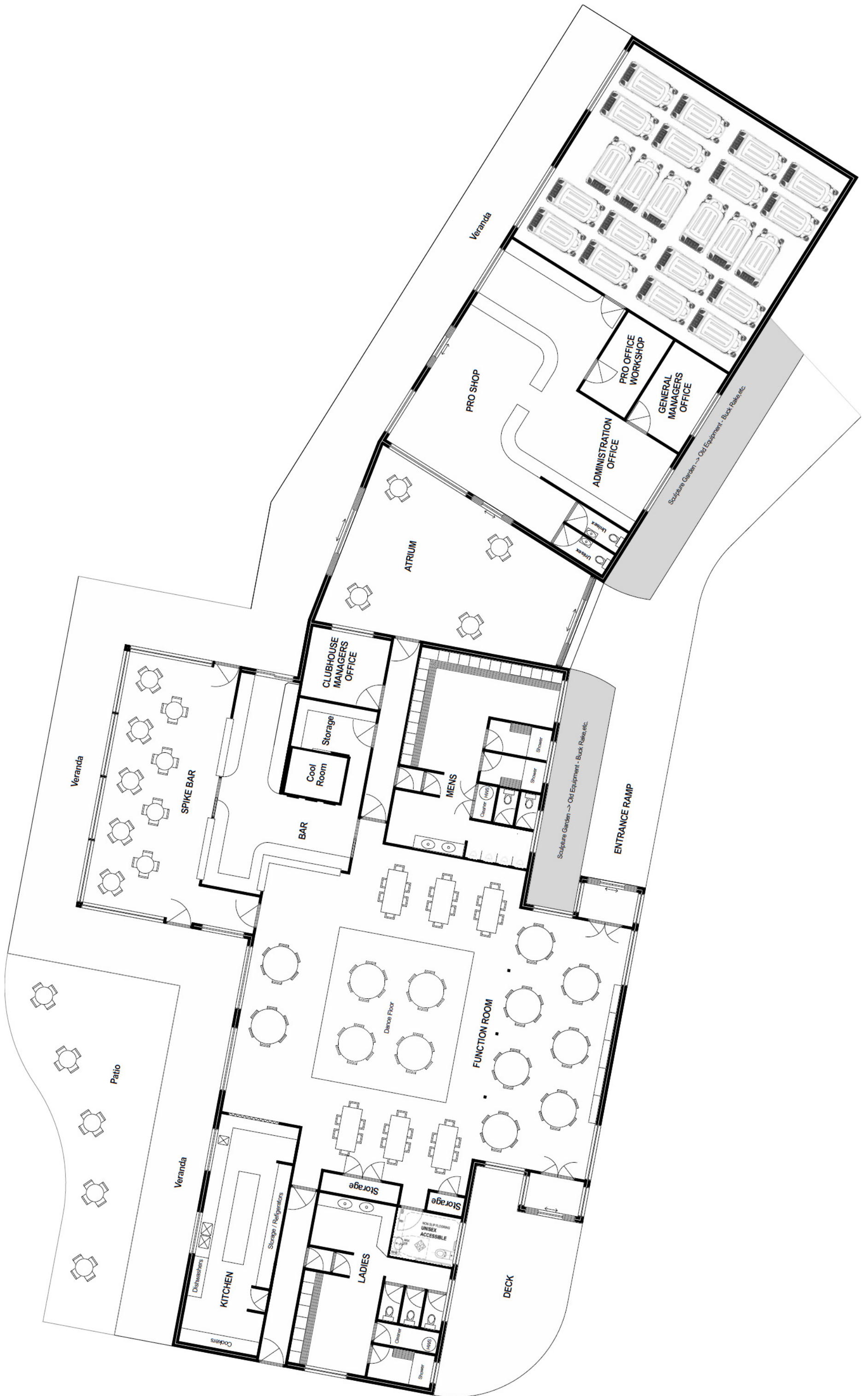
Gate on entry side opened and closed with staff arrival and departure.

One way tyre spikes on exit side so and golfers on the course after staff leave can still exit.

Main shed extended to include the pumping station and control room..

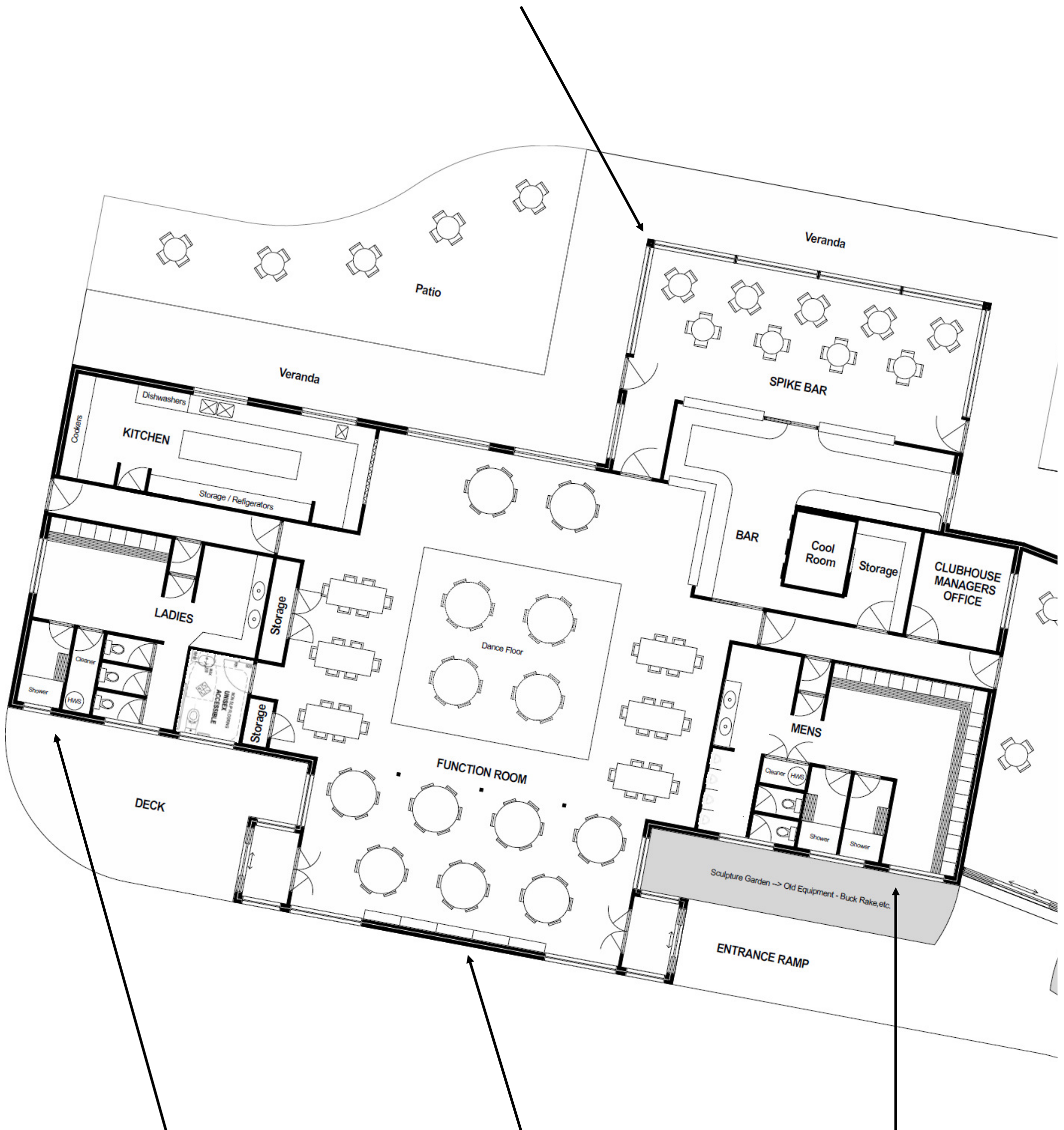
Additional sheds added for equipment storage and chemicals/fertiliser storage.

Enclosure fencing.



West Extension - 5m x 15m

Spike bar seating for 36



South Extension - 2.5m x 11.4m

Additional kitchen floor space
Provision of a unisex accessible toilet
Provision for additional function storage
Increase to ladies room floor space

East Extension - 5m x 15m

Additional Function room seating for 42

North Extension - 2.5m x 11.4m

Increased bar storage floor space
Increased office floor space
Increased mens room floor space

Other features

Dance floor size reduced on the ladies room side to provide more space for tables
Function seating for 90 with dance floor usable / 114 without dance floor usable
Large lockers in the ladies and mens room for hire (will hold a golf bag)
Original design of direct access to the clubroom via the end entries restored
Storage space increased for function storage (unused tables/chairs)

Foyer/Atrium - 4m x 11.4m x 8m

Undercover assembly
Seating for 8 or more.

North East Extension - 20m x 11.4m

Pro shop and administration office
Storage for 22 club owned carts

